

AUTUMN
2014



StillPointe Llama Sanctuary

Llama News

Sanctuary News



WINTER is an etching,
SPRING a watercolor,
SUMMER an oil painting
and **AUTUMN**
a mosaic of them all.

Stanley Horowitz

Dear Friends,

It's that time again! Summer has come and gone and the cold, rainy weather of our Pacific Northwest home again knocks at our doors. We hope you had a beautiful summer filled with fun, laughter and loved ones.



As the rains and the winds return we have several essential tasks around the sanctuary that need some able and willing hands to tend to them. Thank you for all the support you give, whether it be through physical labor, financial support, or just plain moral support, we appreciate your willingness to stick with us. We appreciate each of you!

Love,

StillPointe Llamas

What's INSIDE

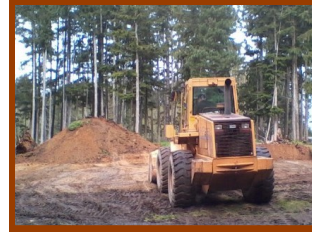
- **State of the Sanctuary**
- **Sanctuary Needs**
- **Awareness reminders**
- **Contact information**



STATE OF THE SANCTUARY

HERE COMES THE BARN!!!

Mike Duty with the bulldozer, gettin' it done!



All cleared with a proper
"llama mountain"



Pip, making sure that
mountain is the right size!



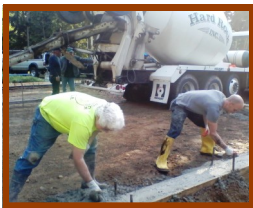
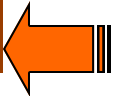
Next,
the
BIG
guys



Mark . . .
inspecting...



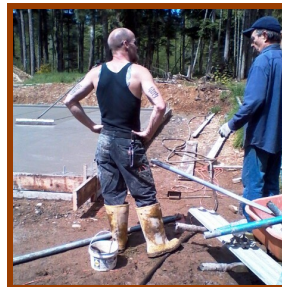
P
O
U
R
I
N
G



Jim Hight
(builder) and
helper



Jim,
smoothing it
out



Mark & one of the
guys



Chela & Tula looking over the
finished product

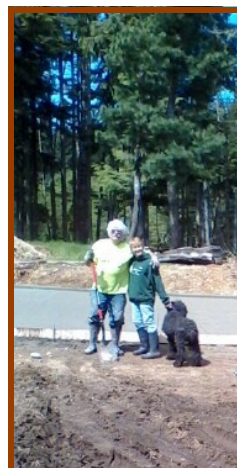


But, where's the
rest of it???

Jim, Chela & Tula.



To be continued.....



Can I walk (poop)
on it yet??

Sanctuary Needs

We find ourselves in need of volunteers. I know we make the plea often but we exist because the community supports our llama sanctuary! Our friends and neighbors keep us going and the sanctuary functioning! We need to secure the shelters with new tarps, take the llamas for walks, feed them, and much more! Please consider lending us your support if you have the time. We can't do it without you! Thank you!!

www.stillpointesanctuary.org/help/volunteer



We need your help! We are working hard to build a much needed barn on our property to provide a reliable shelter from the wind, rain and cold. Sierra's picture is on the right above. She came to us with fur so matted that it had to be sheared. With the recent weather, she needs a warm, dry place to stay while it grows back. The barn would be perfect! Please consider contributing to our barn fund today if you're able! Our llamas thank you, and so do we!

www.stillpointesanctuary.org/help

Some things you may not be aware of

We sell **llama poo!!** It's the best ever **soil enhancement!** The flowers and vegetables we have grown with this stuff are truly amazing. All you need to do is call us or email us to set up a time to come out and get some. **Our donation requests for it are very reasonable!**

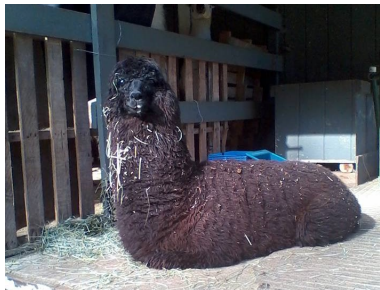
We have a **LOT** of good, already down **firewood available.** All you need to do is cut it to size and haul it out of here. **No cost to you** other than your gas to get here and your labor to haul it out. **No strings attached**...just get it out of here so we don't have to keep tripping over it and can grow grass!



Remember to Join us on Facebook!



On Facebook, join our chat group "I love StillPointe Llama Sanctuary"



Redundantly speaking:

STILLPOINTE LLAMA SANCTUARY

P.O. Box 3320
Silverdale, WA 98383

Phone: 360-813-3213

E-mail: info@stillpointesanctuary.org

Website: www.stillpointesanctuary.org

*"We ought not to treat living creatures like shoes
or household belongings, which when worn with
use we throw away."*

Plutarch

Donation Quick Facts:

StillPointe Sanctuary is a registered Washington State non-profit, and is recognized under 501 (c)3.

We operate on donations. StillPointe does not receive any government assistance.

All donations are tax-deductible to the extent the IRS allows.

In-kind donations of goods & services are

ALWAYS welcome!!

Tax ID: 91-2073601